



ATTAQUANT

Simplifying Technologies

ISO 9001: 2015 CERTIFIED

STORAGE TANK



Process Equipment Design and Development
With Manufacturing, Installation and Commissioning.
Turnkey Projects.

www.attaquant.in



VISION

We will be the most valued solutions provider in terms of process development and design to our customers.

MISSION

To become leading company in designing and manufacturing of equipment, providing services and becoming one stop reliable hub of technical resources for providing complete solution to the requirements of the industry.

To focus on meeting or exceeding customer expectation in terms of product quality and on time delivery

WHY ATTAQUANT?

- Experienced Staff
- Quality packaging
- Huge infrastructure
- Cutthroat pricing
- Timely delivery
- Quality Service after Sale
- Client friendly policies
- Wide distribution reach
- Technically feasible solutions

ATTAQUANT PRODUCT RANGE

| | |
|--------------------------------|------------------------|
| ✓ ZERO LIQUID DISCHARGE SYSTEM | ✓ DISTILLATION COLUMNS |
| ✓ SOLVENT RECOVERY SYSTEM | ✓ PRE-HEATERS |
| ✓ EVAPORATORS | ✓ AUTOCLAVES |
| ✓ DRYERS | ✓ EXTRACTORS |
| ✓ CENTRIFUGES | ✓ HEAT PUMP |
| ✓ REACTORS | ✓ STORAGE TANKS |
| ✓ HEAT EXCHANGERS | ✓ SKIDS |



INTRODUCTION

"Attaquant Enterprises Pvt. Ltd.", is a company with the right expertise who have many years of relevant experience in Process Engineering. **Attaquant** is a disciplined, data-driven company who has a right approach and methodology for eliminating defects in any process – from design to manufacturing and from product to good service.

We go out of traditional way not only to offer comprehensive solutions for all your Process; but to also provide you with the information and resources you need to make refined decisions about which solutions are best for you, and your project. We have started doing flawless Engineering in designing & manufacturing of all equipment's required in Chemical, Solvent recovery, Paint industry, Water & Waste water management, Pharmaceutical Industries and in Oil & Gas. We ventured into process engineering market and started offering Energy Saving Solution to various process industries in National & International market.

We are one of the leading manufacturers, traders and exporters of a wide range of the premium quality Process Plant Equipment. Our product range includes Plate Fin Heat Exchanger Set Up, Static Mixer, Demister pads / Mist eliminators, Low pressure vessels, Distillation column trays and related internals and Hot Water System we offer a wide range of products. For manufacturing the offered range as per the industry set norms and regulations, our professionals make use of latest tools and machinery. Their current stability, strong construction, optimum functionality, low maintenance and high performance, makes our products highly demanded in the market of process industries of all sections.

The company now introduces eco-friendly pre-fabricated insulation panel systems in a range of profiles, thicknesses, and finishes. The specialty of these panels is that, they are perfect for the speedy creation of cold stores of any size at the site due to their precise interlocking design and great insulation properties, and are also eco-friendly both in their material and in their manufacturing process itself. These new eco-friendly panel solutions from Attaquant can be used to create cold storages of any size, from small walk-ins to very large cold rooms.

Large production capacity has helped us in managing the bulk projects in the most efficient manner. To avoid any damage while transportation, we pack the offered range with tamper-proof packaging before dispatch. Timely delivery of the offered range of products is assured, due to our extensive distribution network.



STORAGE TANK

AEPL manufacture a wide range of Storage Tank.

Storage Tank are containers that holds liquids, compressed gases, etc. which is not typically labelled or regulated as a storage tank or it is used for storage of heat or cold mediums for the short or long terms storage.

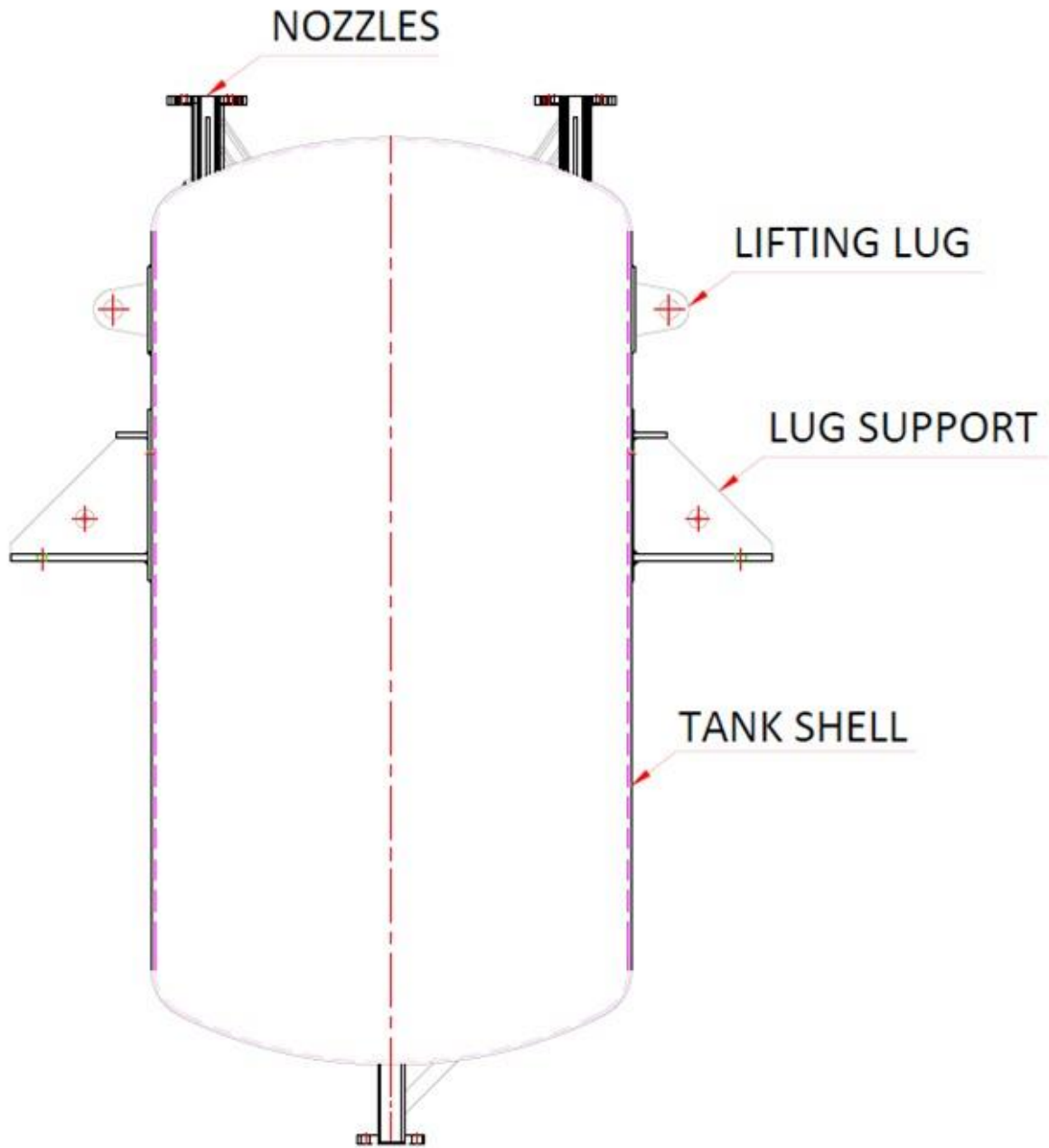


SPECIAL FEATURES

Most liquids can evaporate, spill, or seep through even the smallest opening, special consideration must be made for their safe and secure handling. This usually involves building a bonding, or containment dike, around the tank, so that any leakage may be safely contained.



STORAGE TANK





TYPES OF STORAGE TANK

Basically there are eight types of tanks used to store liquids

- Fixed-roof tanks
- External floating roof tanks
- Internal floating roof tanks
- Domed external floating roof tanks
- Horizontal tanks
- Pressure tanks
- Variable vapour space tanks
- LNG (Liquefied Natural Gas) tanks



ADVANTAGES

- ✚ Safe
- ✚ Reliable
- ✚ Cost effective transport medium for moving bulk liquids.
- ✚ Easy and affordable installation.



MATERIAL OF CONSTRUCTION

Steel and concrete remain one of the most popular choices for tanks, glass-reinforced plastic, thermoplastic and polyethylene tanks are increasing in popularity. They offer lower build costs and greater chemical resistance, especially for storage of speciality chemicals.





AEPL PROCESS PLANT SOLUTION

AEPL is excellent in developing a process concept into an installed plant solution operating with a guaranteed plant performance.

AEPL is a full-service provider for key equipment and process plant solutions. Our excellent position comprises an extensive know-how and long-standing experience in developing process concepts into installed plant solutions operating with a guaranteed performance.

Basic Engineering

As soon as the customer has agreed upon the conceptual design it can be further developed into a basic engineering package for a commercial size plant. At this stage we bring in our expertise and capabilities in scaling-up pilot and demonstration plants into commercial size process units. A basic engineering Package typically consists of:

- ✓ Process Flow Diagrams (PFD)
- ✓ Heat & Mass Balance
- ✓ Piping & Instrumentation Diagrams (P&ID's)
- ✓ Equipment specifications
- ✓ Instrument specifications
- ✓ Functional design specifications for plant control and safeguarding
- ✓ Preliminary equipment layout
- ✓ Capital cost calculation for skid mounted units
- ✓ Capital cost estimate based on factors when the total project scope consists of a basic engineering package plus key equipment only



Detail Engineering

For skid mounted units, upon approval of the basic engineering package, the project moves into the detail engineering phase, resulting in:

- ✓ P&ID's final for construction
- ✓ Equipment and instrument specifications final for construction
- ✓ Mechanical drawings for key equipment
- ✓ 3-D plant model
- ✓ Piping isometrics
- ✓ Plant automation concept

Project Management

All of the above activities are performed by highly qualified and experienced in-house staff. We rely upon our people and strive for business excellence. Project teams work under the guidance of the project manager who has overall responsibility for the project budget, schedule and quality. Throughout the entire project, the project manager remains in close contact with the customer.

In all its activities our employs an efficient Quality Assurance System which is accredited in accordance with the latest standards of ISO9001 for Quality, Safety, Health and Environment. Standard procedures, protocols and test documentation are used from initial design to the final plant performance test and ensure a continued high-quality result.



Proprietary Equipment

All proprietary and key process equipment is produced either in our modern workshop or sourced from approved and certified sub-suppliers. Our in-house fabrication fulfils all applicable requirements and design codes. The range of construction materials includes stainless steel, special alloys as well as titanium, zirconium and tantalum.

Skid Mounted Plants

Skids are assembled in our modern, purpose-built workshop or at selected, certified sub- contractors. Larger plants consist of more than one module.

The modular assembly includes the installation of:

- ✓ Steel structure Equipment
- ✓ Piping and valves
- ✓ Instrumentation
- ✓ Cabling and junction boxes
- ✓ Insulation

Advantages of skid mounted; turn-key plants are:

- ✓ Short delivery time through an integrated fast track execution
- ✓ Low overall investment costs
- ✓ Reduced on-site erection and hook-up time and thus minimal site disruption Manufacture of the complete plant under workshop conditions ensuring the highest quality
- ✓ Completion of the Factory Acceptance Test (FAT) prior to delivery
- ✓ Qualification tests prior to plant delivery



Transport and Installation

AEPL has a team of highly experienced installation supervisors, who provide construction support services for site-built plants, and for the off-loading and installation of skid mounted plants. These supervisors liaise closely with the customer's construction manager, safety officer and mechanical contractor, to ensure a safe and trouble-free installation.

Commissioning and Start-up

Following completion of all mechanical and electrical tie-ins to the plant, process engineers are mobilized to undertake plant commissioning. The commissioning team is usually headed by the process engineer responsible for the plant design. Plant commissioning follows a structured plan and ends with the start-up of the process unit followed by a Site Acceptance Test (SAT). Training of customer's operators often takes place in parallel.



ATTAQUANT
Simplifying Technologies

ISO 9001: 2015 CERTIFIED

Corporate Office:

601 (M 90), City Avenue,
Near Sayaji Hotel, Bhumkar, Chowk,
Wakad, Pune (Maharashtra), 411057,
India.

+91-8788482769/+91-9423589966
contact@attaquant.in, info@attaquant.in

Hyderabad Office:

Sales & Service – Office 1C,
Nandanavanam Complex, Sanjeeva
Reddy Nagar, Near Metro Station,
Hyderabad, 500038, India.

+91-8788482769
contact@attaquant.in

Manufacturing Unit:

Alandi Bypass Road, Gat No.138,
Near Growel Company,
At Post, Dhanore, Tal. Khed, Dist. Pune,
Maharashtra- 412105, India.

+91-9145205069
services@attaquant.in